

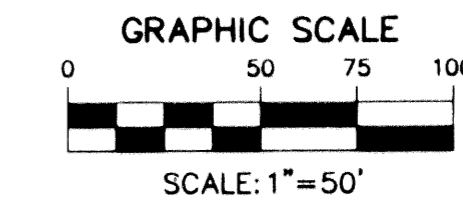
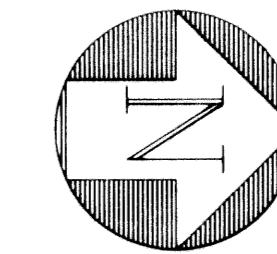
COLONY PARK P.U.D.

0757-001

160

Being a replat of portions of Tracts 10, 11, and 18 of Block 3 of the Plat of Palm Beach Farms Company Plat No. 3, as recorded in Plat Book 2, Pages 45, through 54, inclusive, of the Public records of Palm Beach County, Florida. Lying in Sections 29 and 32, Township 43 South, Range 42 East, Palm Beach County, Florida.

SHEET 2 OF 3
JULY 2001



LEGEND

- E EAST
- L ARC LENGTH
- N NORTH
- O.R.B. OFFICIAL RECORD BOOK
- POB POINT OF BEGINNING
- POC POINT OF COMMENCEMENT
- R RADIUS
- R.O.W. RIGHT-OF-WAY
- R.P.B. ROADWAY PLAT BOOK
- S SOUTH
- U.E. UTILITY EASEMENT
- △ CENTER LINE
- △ DELTA ANGLE
- PERMANENT REFERENCE MONUMENT

TRACT "A" PLAT OF
SUMMER CREEK
(PLAT BOOK 64, PAGE 161)

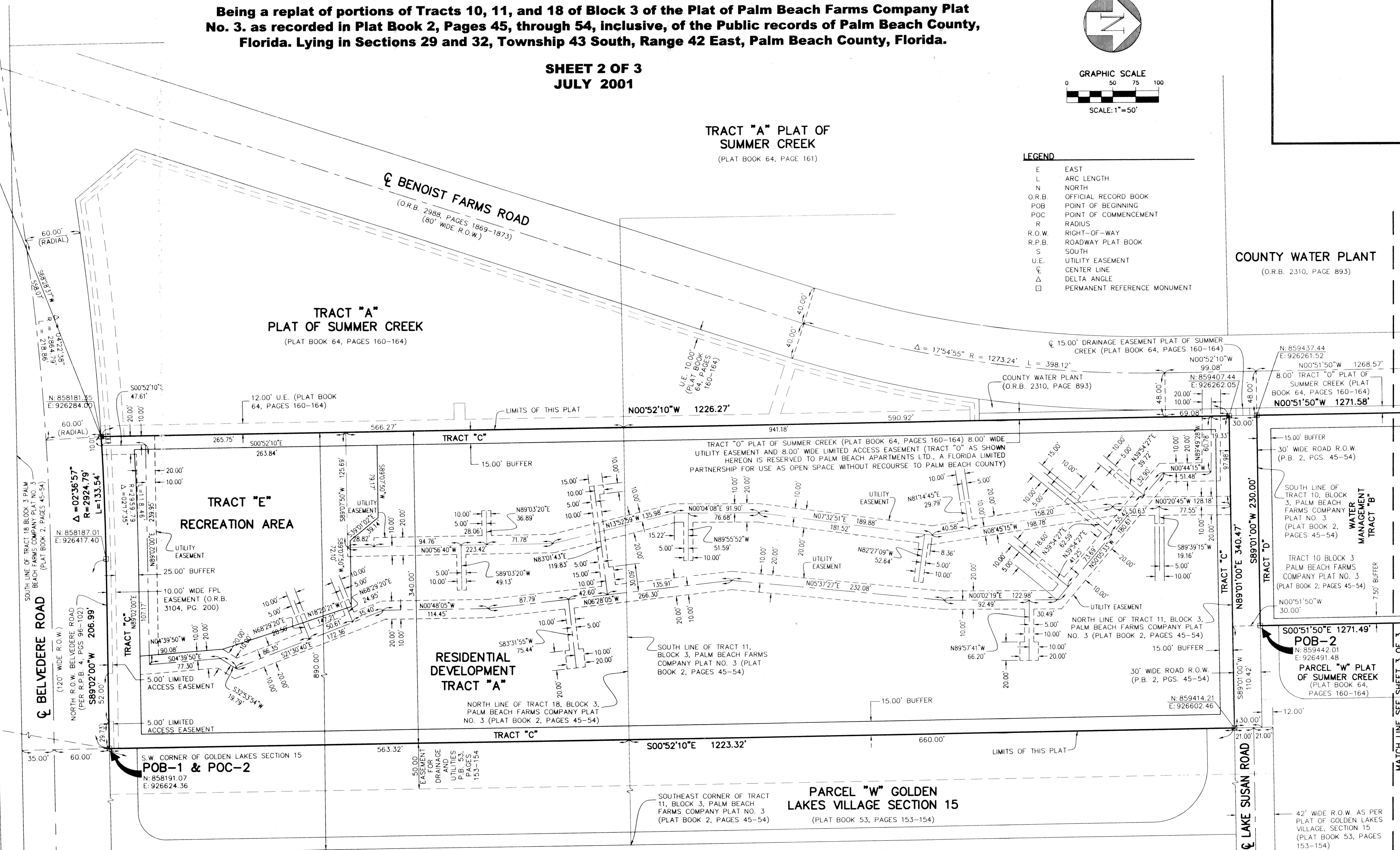
COUNTY WATER PLANT
(O.R.B. 2310, PAGE 893)

FOUND PALM BEACH
COUNTY CONTROL
MONUMENT "PBF # 9"
N: 857976.605
E: 925764.845

LWDD CANAL L-3

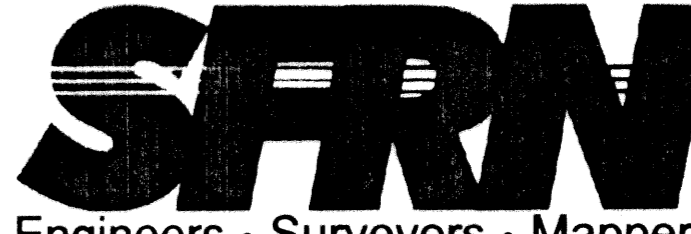
FOUND PALM BEACH
COUNTY CONTROL
MONUMENT
"S-1"
N: 853374.54
E: 925805.57

Colony Park P.U.D.
PLAT BOOK 150A
ZONING PB 5411
ZIP CODE 33411



MATCH LINE SEE SHEET 3 OF 3

COLONY PARK P.U.D.



DATE	06/04/2001	S H E E T 2/3
SCALE	1" = 50'	
CAD FILE	95513PLAT.dwg	95513.00
SKETCH PROJECT	95513	
DRAWN	SFRN STAFF	JOB NO.
CHECKED	G. RAYMAN	95513.00

1201 BELVEDERE ROAD, WEST PALM BEACH, FLORIDA 33405
PH (561)655-1151 • FAX (561)832-9390 • WWW.SFRNINC.COM